



CITY OF SWISHER Water System Implementation Plan

Electronic Meeting Information

Website: <https://zoom.us>
Meeting ID: 772-302-188
Password: 981521
 or Call: 1-312-626-6799



Visit the Website for Additional Information
www.swisheria.org/municipal_water_system

As part of the planning stages for the City of Swisher’s municipal water system, HR Green has completed several iterations on cost evaluations and sequencing to identify a potential path forward for the community. During the Public Information Meetings, the following implementation plans and associated planning-level costs have been presented to the community:

Public Information Meeting #1 (1/25/23): A range of costs were identified as included in the September 2022 PER Amendment. The range in user rates was based on differences between using a 20-year or 30-year State Revolving Fund (SRF) loan and assuming a 10-20 year implementation period.

Public Information Meeting #2 (2/8/23): Updated costs were identified anticipated on financing with a 30-year SRF loan.

Public Information Meeting #3 (2/22/23): HR Green will present a more detailed implementation plan to extend the implementation of a potential municipal water system over a 35-year duration. DNR will be attending this meeting to answer questions on PFAS and Grants.

Additional Public Information Meeting #4 (2/26/23):
HR Green is hosting an additional Public Information Meeting on Sunday February 26th at 3 p.m. at the American Legion.
 This will give community members an additional opportunity to ask questions, seek clarification, and receive information.

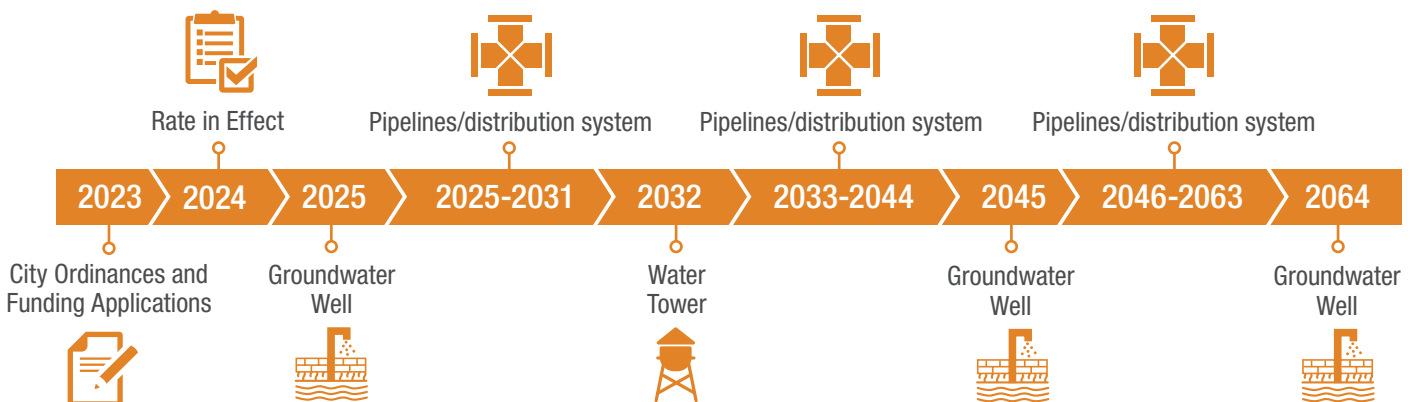
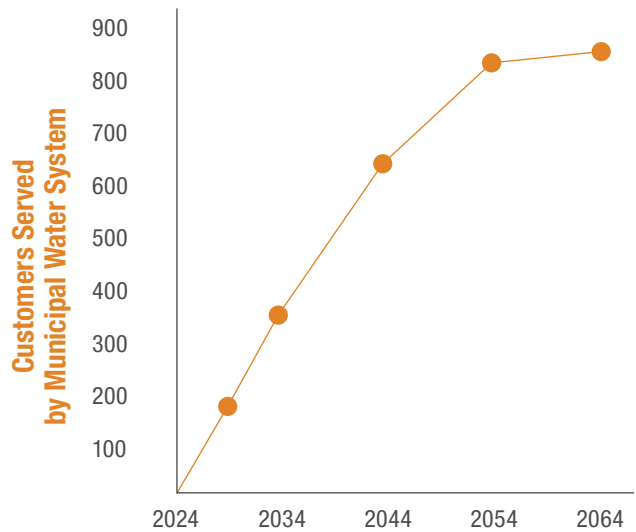
If the public referendum vote passes, it is anticipated the City over the course of 2023 would develop ordinances for policies and procedures of implementing a water system, pursue additional funding sources, and work with its Municipal Financial Advisor to establish a rate structure to be implemented no sooner than January 2024. The implementation period shown on the timeline and chart

below, as well as the map on the reverse side, corresponds to the following preliminary rates that will ultimately be determined the City:

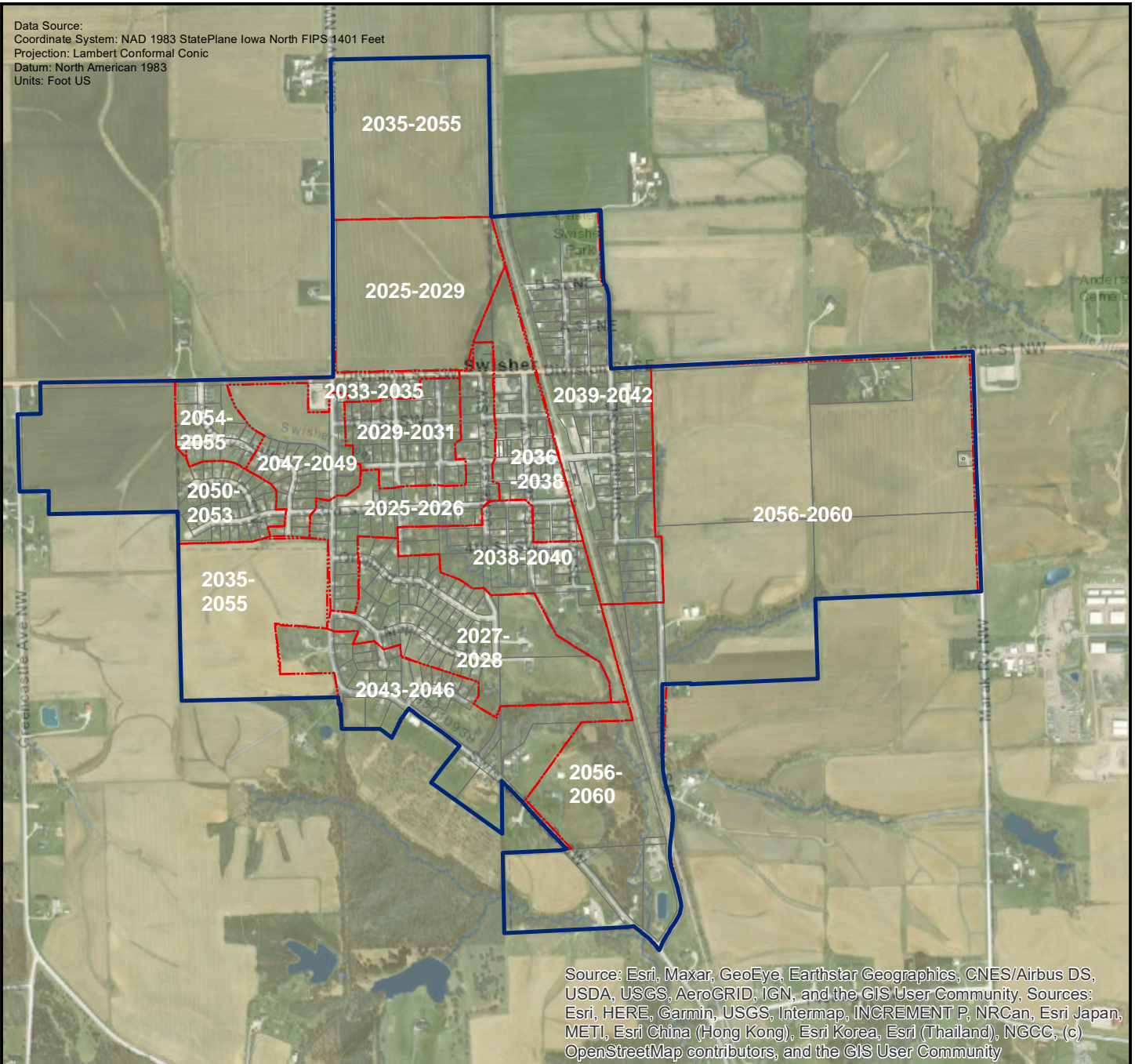
Community-wide flat Base Rate in the range of \$15 to \$25 per month: This Base Rate would be used to establish a Water Fund to be used on current and future capital improvement projects.

Service Rate in the range of \$55 to \$65 per month. This flat rate would be assessed to customers as they are served by the municipal water system. The map identifies anticipated time period that these flat Service Rates would go into effect. Once a customer is served by the water system, they would be charged the Base Rate plus Service Rate for a total cost or in the range of **\$70 to \$90 per month.**

These rates do not assume any grants, forgivable SRF loans, or other means separate funding. If separate funding is obtained, the user rates could be reduced, the implementation period could be accelerated, or a combination of the two.



Data Source:
 Coordinate System: NAD 1983 StatePlane Iowa North FIPS 1401 Feet
 Projection: Lambert Conformal Conic
 Datum: North American 1983
 Units: Foot US



Source: Esri, Maxar, GeoEye, Earthstar Geographics, CNES/Airbus DS, USDA, USGS, AeroGRID, IGN, and the GIS User Community, Sources: Esri, HERE, Garmin, USGS, Intermap, INCREMENT P, NRCan, Esri Japan, METI, Esri China (Hong Kong), Esri Korea, Esri (Thailand), NGCC, (c) OpenStreetMap contributors, and the GIS User Community

Legend

 City_Limits

**WATER SERVICE
 BUILDOUT**

Municipal Water
 System

Swisher, IA

