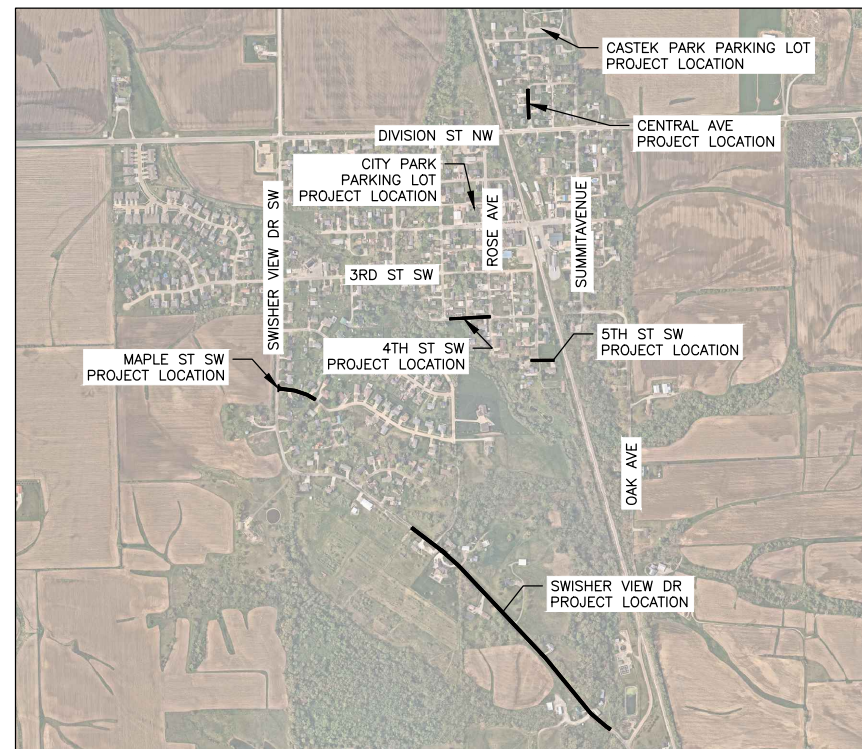


# SWISHER PAVEMENT REHABILITATION AND PARKING LOTS - 2025

## CITY OF SWISHER . IA

THE PROPOSED IMPROVEMENTS INCLUDED IN THESE DRAWINGS HAVE BEEN DESIGNED IN ACCORDANCE WITH THE IOWA STATEWIDE URBAN DESIGN AND SPECIFICATIONS (SUDAS, 2025 EDITION) AND THE CITY OF SWISHER SUPPLEMENTAL SPECIFICATIONS TO IOWA STATEWIDE URBAN STANDARD SPECIFICATIONS (SUDAS) FOR PUBLIC IMPROVEMENT (APRIL 2023)

### LOCATION MAP

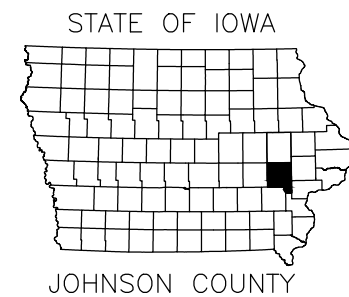


### CERTIFICATION

	I hereby certify that this engineering document was prepared by me or under my direct personal supervision and that I am a duly licensed Professional Engineer under the laws of the State of Iowa.	
	CALEB P. JANSEN, P.E. License Number: 28973 My license renewal date is December 31, 2025. Pages or sheets covered by this seal:	05/23/2025 DATE

### SHEET INDEX

Sheet Number	Sheet Title
A.01	COVER SHEET
C.01	ESTIMATED QUANTITIES AND REFERENCE INFORMATION
D.01	SWISHER VIEW DRIVE PLAN
D.02	4TH STREET AND 5TH STREET PLAN
D.03	CENTRAL AVENUE AND MAPLE STREET PLAN
D.04	CITY PARK PARKING LOT PLAN
D.05	CASTEK PARK PARKING LOT PLAN



PREPARED FOR:



8710 EARHART LANE SW | CEDAR RAPIDS, IOWA 52404  
Phone: 319.841.4000 | Toll Free: 800.728.7805 | Fax: 713.965.0044 | HRGreen.com

BID SET

DRAWN BY: JJJ	JOB DATE: 2025	BAR IS ONE INCH ON OFFICIAL DRAWINGS: 0" = 1"
APPROVED: CPJ	JOB NUMBER: 10130127	IF NOT ONE INCH, ADJUST SCALE ACCORDINGLY.
CAD DATE: 5/23/2025 1:30:05 PM		
CAD FILE: O:\10130127.02\CAD\2025PavementRehabAndParking\A\A.01.dwg		

NO.	DATE	BY	REVISION DESCRIPTION



SWISHER PAVEMENT REHABILITATION - 2025  
CITY OF SWISHER  
SWISHER, IOWA

TITLE SHEETS  
COVER SHEET

SHEET NO.  
A.01

ESTIMATED PROJECT QUANTITIES				
NO.	CODE	BID ITEM	UNITS	TOTAL QUANTITY
1	2010-E	EXCAVATION, CLASS 10	CY	329
2	2010-X	STONE BASE, MACADAM, 6 INCH	TON	100
3	7020-A	HMA PAVEMENT, COMMERCIAL MIX	TON	35
4	7030-X	GRANULAR SURFACING, CLASS A, 2 INCH	TON	37
5	7040-A	FULL-DEPTH PAVEMENT PATCH, HMA	SY	181
6	7060-A	BITUMINOUS SEAL COAT, 5/8" SINGLE SEAL COAT	SY	7240
7	7060-A	BITUMINOUS SEAL COAT, 3/8" DOUBLE SEAL COAT	SY	2304
8	8030-B	PAINTED PAVEMENT MARKINGS, SOLVENT/WATERBORNE	STA	15.38
9	8030-A	TRAFFIC CONTROL	LS	1
10	8040-X	BOLLARD	EA	1
11	9010-A	CONVENTIONAL SEEDING, SEEDING, FERTILIZING, AND MULCHING, TYPE 1	AC	0.06
12	11020-A	MOBILIZATION	LS	1

PROJECT LOCATIONS											
STREET	FROM	TO	HMA SURFACE PATCHING (TON)	SINGLE SEAL COAT (SY)	DOUBLE SEAL COAT (SY)	HMA PATCHING (SY)	STRIPING (STA)	STONE BASE (TONS)	GRANULAR SURFACING (TONS)	BOLLARD (EA)	SEEDING (AC)
SWISHER VIEW DRIVE	520' EAST OF HILLTOP RD SW	OAK AVE SE	25.0	5175		181					
MAPLE STREET SW	SWISHER VIEW DRIVE	306' EAST OF SWISHER VIEW DRIVE	3.0	709							
5TH STREET SW	WEST DEAD END	EAST DEAD END	2.0	307							
4TH STREET SW	JEFFERSON AVENUE	ROSE AVENUE	3.0	576							
CENTRAL AVENUE NE	DIVISION STREET	A STREET	2.0	473							
CASTEK PARKING LOT					1851		9.18	100	37		0.06
DOWNTOWN PARKING					453		6.20			1	
<b>TOTAL</b>			35.0	7240	2304	181	15.38	100	37	1	0.06

ESTIMATE REFERENCE INFORMATION		
ITEM NO.	ITEM CODE	ITEM DESCRIPTION
		1. APPLY THE 2025 IOWA SUDAS SPECIFICATIONS FOR PRODUCT SPECIFICATION AND EXECUTION METHODOLOGY.
		2. SUPPLEMENTAL SPECIFICATIONS: CITY OF SWISHER, SUPPLEMENTAL SPECIFICATIONS TO IOWA STATEWIDE URBAN STANDARD SPECIFICATIONS (SUDAS) FOR PUBLIC IMPROVEMENTS, DATED APRIL 2023.
1	2010-E	EXCAVATION, CLASS 10
2	2010-X	STONE BASE, MACADAM, 6 INCH A. REFER TO D SHEETS FOR TYPICAL SECTION.
3	7020-A	HMA PAVEMENT, COMMERCIAL MIX A. ITEM IS INCLUDED AS A CONTINGENCY AND SHALL ONLY BE USED TO SPOT REPAIR EXISTING SEAL COAT AS NEEDED.
4	7030-X	GRANULAR SURFACING, CLASS A, 2 INCH
5	7040-A	FULL-DEPTH PAVEMENT PATCH, HMA A. CONTRACTOR SHALL REPLACE HMA PAVEMENT IN AREAS FOR FULL DEPTH PATCHING AND SHALL MATCH EXISTING PAVEMENT DEPTH, ENSURING FINAL GRADE IS FLUSH TO ADJACENT PAVEMENT B. ITEM WILL BE MEASURED AND PAID PER SQUARE YARD AND SHALL BE CONSIDERED FULL COMENSATION FOR FURNISHING ALL TOOLS, EQUIPMENT, LABOR, AND MATERIALS NECESSARY. C. HMA MIX USED FOR ASPHAT PATCHING. REMOVAL OF PAVEMENT FOR PATCHING CONSIDERED INCIDENTAL.
6	7060-A	BITUMINOUS SEAL COAT, 5/8" SINGLE SEAL COAT A. REFER TO D SHEETS FOR LOCATIONS B. CONTRACTOR TO USE PEA GRAVEL ONLY AS THE COVER AGGREGATE. C. ITEM WILL BE MEASURED AND PAID PER SQUARE YARD AND SHALL BE CONSIDERED FULL COMPENSATION FOR FURNISHING ALL TOOLS, EQUIPMENT, LABOR, AND MATERIALS NECESSARY
7	7060-A	BITUMINOUS SEAL COAT, 3/8" DOUBLE SEAL COAT A. REFER TO D SHEETS FOR LOCATIONS B. CONTRACTOR MAY USE CHIPS OR PEA GRAVEL ON THE FIRST SEAL COAT AS COVER AGGREGATE. C. CONTRACTOR TO USE PEA GRAVEL ONLY AS THE SECOND SEAL COAT COVER AGGREGATE. D. ITEM WILL BE MEASURED AND PAID PER SQUARE YARD AND SHALL BE CONSIDERED FULL COMPENSATION FOR FURNISHING ALL TOOLS, EQUIPMENT, LABOR, AND MATERIALS NECESSARY
8	8030-B	PAINTED PAVEMENT MARKINGS, SOLVENT/WATERBORNE
9	8030-A	TRAFFIC CONTROL A. TRAFFIC CONTROL SHALL CONSIST OF SUDAS STANDARD 8030.106 OR 8030.116, EXCEPT SAFETY FENCE SHALL NOT BE PLACED. B. BARRICADES SHALL BE REMOVED DURING NON-WORKING HOURS OR WHEN WORKERS ARE NOT PRESENT. C. WHEN WORK IS PERFORMED ON NO OUTLET AND ONE-WAY STREETS, THE CONTRACTOR SHALL PROVIDE NOTICE TO ALL PROPERTY OWNERS, 2 DAYS PRIOR NOTICE, EXCLUDING WEEKENDS AND HOLIDAYS, OF WHEN THE ROADWAY WILL BE CLOSED TO COMPLETE THE WORK. THE NOTICE SHALL CONTAIN AN ESTIMATED TIMELINE OF THE CLOSURE AND NUMBER OF DAYS TO COMPLETE THE WORK. IF THE CONTRACTOR CHOOSES TO COMPLETE THE WORK WITHOUT A ROAD CLOSURE, NO NOTICE IS REQUIRED. D. ALL TRAFFIC CONTROL USED ON THIS PROJECT TO BE SUFFICIENTLY WEIGHTED TO PREVENT MOVEMENT BY NATURAL FORCES. E. SHOULD A SITUATION ARISE WHERE EMERGENCY RESPONSE IS REQUIRED, THE CONTRACTOR SHALL MAKE ALL REASONABLE ACCOMMODATIONS TO NOT HINDER THE RESPONSE OF EMERGENCY VEHICLES OR PERSONNEL. F. THIS ITEM DOES NOT REQUIRE PORTABLE DYNAMIC MESSAGE SIGNS, BARRIER RAIL, FLOOD LIGHTING, OR PILOT CARS. E. CONTRACTOR TO GIVE ADJACENT PROPERTY OWNERS AT LEAST 48 HOURS NOTICE TO AVOID ACCESIBILITY CONFLICTS.
10	8040-X	BOLLARD A. REFER TO D SHEETS FOR LOCATION AND DETAIL.
11	9010-A	CONVENTIONAL SEEDING, SEEDING, FERTILIZING, AND MULCHING, TYPE 1
12	11020-A	MOBILIZATION

BID SET

DRAWN BY: JJJ JOB DATE: 2025  
 APPROVED: CPJ JOB NUMBER: 10130127  
 CAD DATE: 5/23/2025 1:35:11 PM  
 CAD FILE: O:\10130127.02\CAD\2025PavementRehabAndParking\C\C.01.dwg

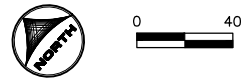
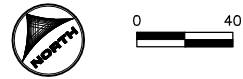
NO.	DATE	BY	REVISION DESCRIPTION






SWISHER PAVEMENT REHABILITATION – 2025  
 CITY OF SWISHER  
 SWISHER, IOWA

QUANTITIES AND GENERAL INFORMATION  
 ESTIMATED QUANTITIES AND REFERENCE  
 INFORMATION

SHEET NO.  
 C.01



**LEGEND**

-  PAVEMENT REMOVAL AND FULL DEPTH PATCH
-  BITUMINOUS SEAL COAT, SINGLE SEAL
-  BITUMINOUS SEAL COAT, DOUBLE SEAL

Xref: xg-1-dh01: Xv-1-AERIAL; Xc-1-DSGN; Parking Lot\_V2

DRAWN BY: JJL      JOB DATE: 2025  
 APPROVED: CPJ      JOB NUMBER: 10130127  
 CAD DATE: 5/23/2025 1:36:59 PM  
 CAD FILE: O:\10130127.02\CAD\2025PavementRehabAndParking\10130127.dwg

BAR IS ONE INCH ON OFFICIAL DRAWINGS.  
 IF NOT ONE INCH, ADJUST SCALE ACCORDINGLY.

NO.	DATE	BY	REVISION DESCRIPTION

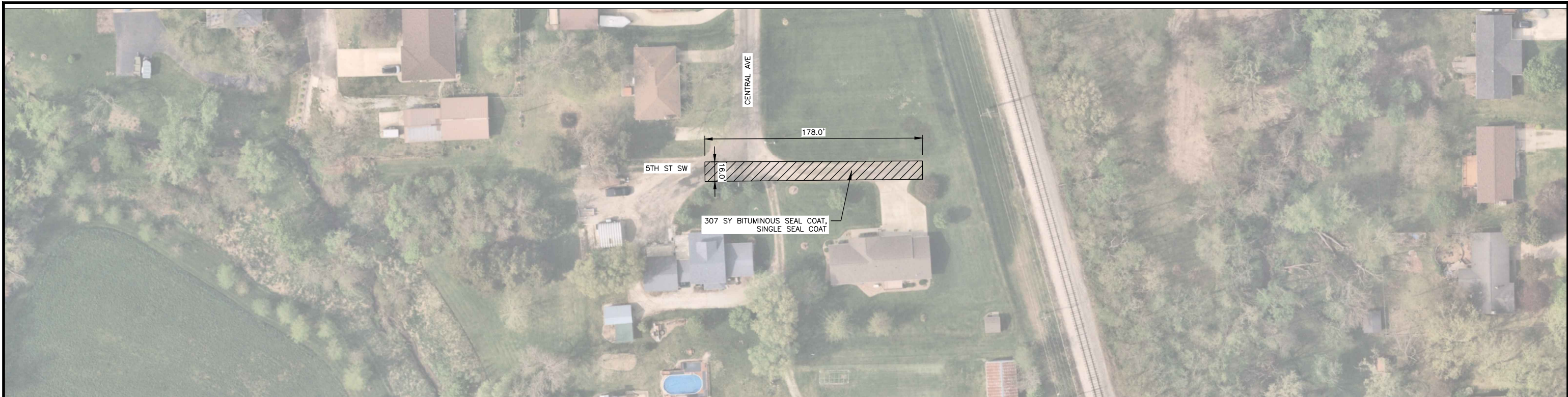


**SWISHER PAVEMENT REHABILITATION – 2025**  
 CITY OF SWISHER  
 SWISHER, IOWA


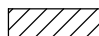

PLAN SHEETS  
**SWISHER VIEW DRIVE PLAN**

BID SET

SHEET NO.  
**D.01**



**LEGEND**

-  PAVEMENT REMOVAL AND FULL DEPTH PATCH
-  BITUMINOUS SEAL COAT, SINGLE SEAL
-  BITUMINOUS SEAL COAT, DOUBLE SEAL

Xrefis: xgl-1-dh01: XV-1-AERIAL; XC-1-DSGN; Parking Lot\_V2

DRAWN BY: JJL      JOB DATE: 2025  
 APPROVED: CPJ      JOB NUMBER: 10130127  
 CAD DATE: 5/23/2025 1:36:59 PM  
 CAD FILE: O:\10130127.02\CAD\2025PavementRehabAndParking\D\01.dwg

BAR IS ONE INCH ON OFFICIAL DRAWINGS.  
 IF NOT ONE INCH, ADJUST SCALE ACCORDINGLY.

NO.	DATE	BY	REVISION DESCRIPTION

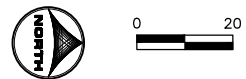
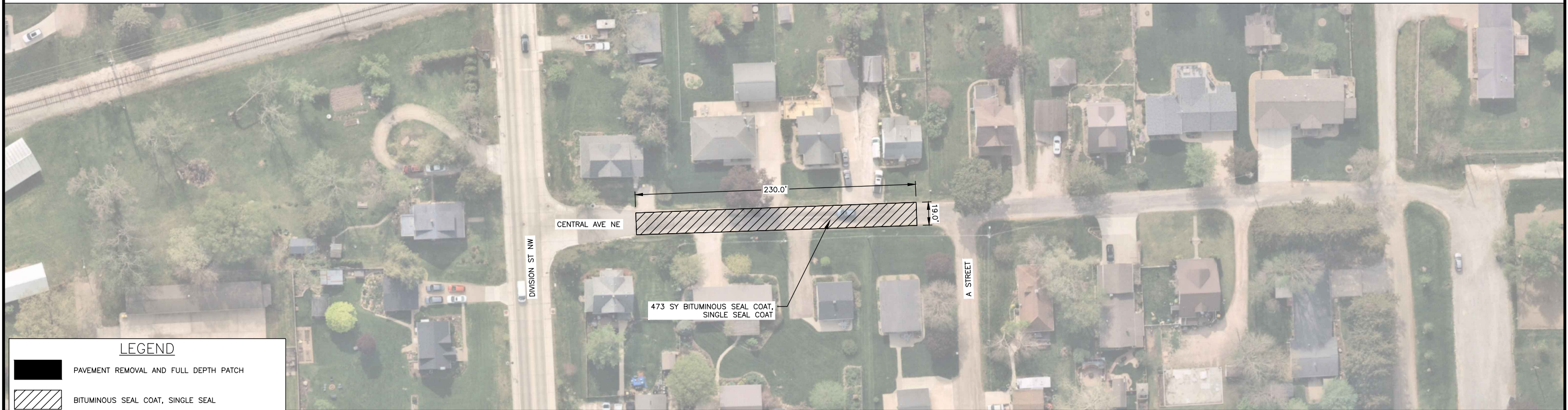
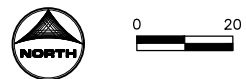
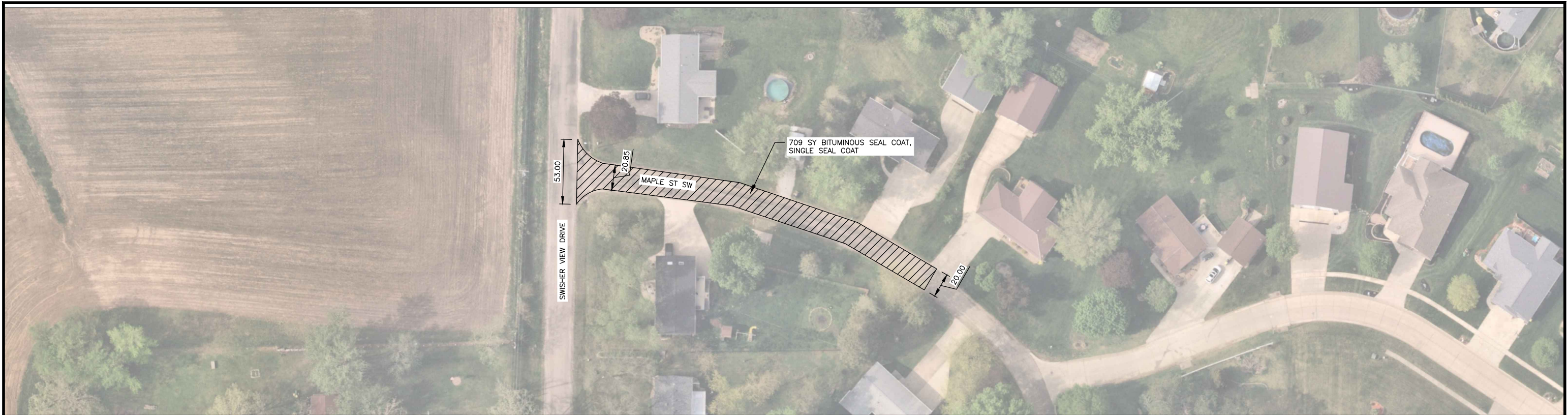


**SWISHER PAVEMENT REHABILITATION – 2025**  
 CITY OF SWISHER  
 SWISHER, IOWA

PLAN SHEETS  
**4TH STREET AND 5TH STREET PLAN**

BID SET

SHEET NO.  
**D.02**



**LEGEND**

- PAVEMENT REMOVAL AND FULL DEPTH PATCH
- BITUMINOUS SEAL COAT, SINGLE SEAL
- BITUMINOUS SEAL COAT, DOUBLE SEAL

BID SET

DRAWN BY: JJJ      JOB DATE: 2025  
 APPROVED: CPJ      JOB NUMBER: 10130127  
 CAD DATE: 5/23/2025 1:59:47 PM  
 CAD FILE: O:\10130127.02\CAD\2025PavementRehabAndParking\D\01.dwg

BAR IS ONE INCH ON  
 OFFICIAL DRAWINGS.  
 IF NOT ONE INCH,  
 ADJUST SCALE ACCORDINGLY.

NO.	DATE	BY	REVISION DESCRIPTION

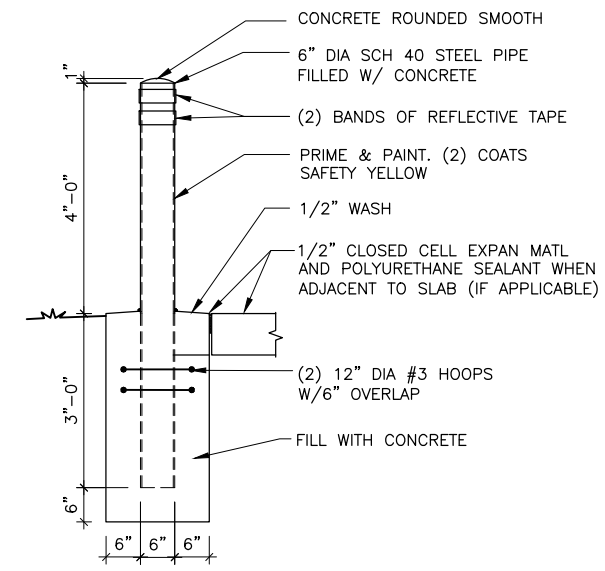
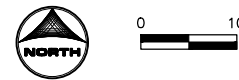
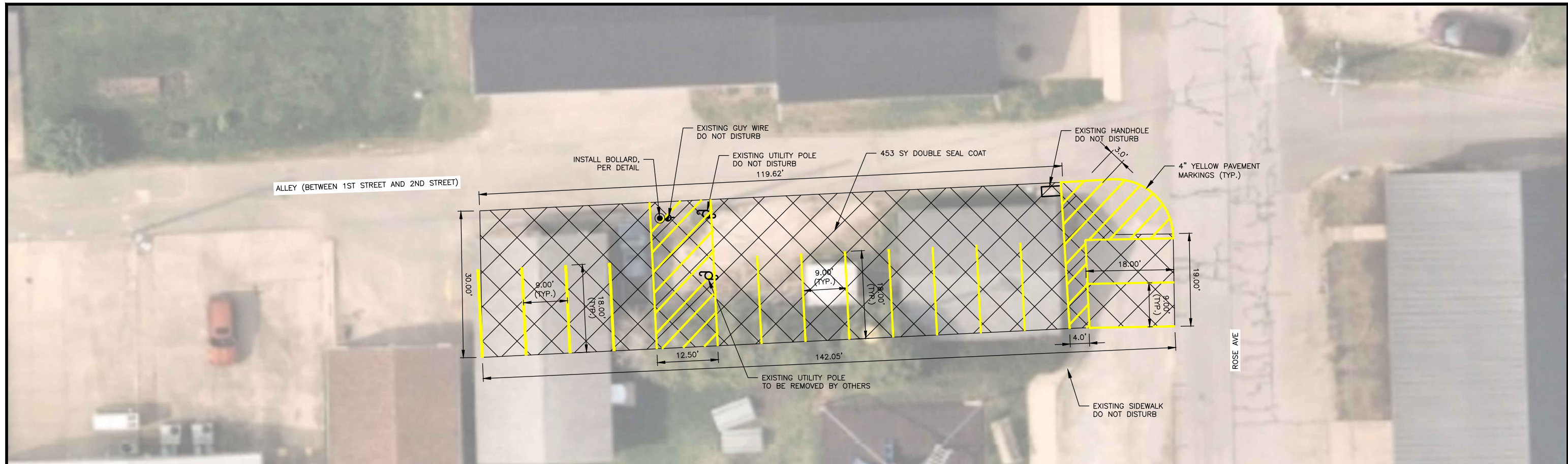


**SWISHER PAVEMENT REHABILITATION – 2025**  
 CITY OF SWISHER  
 SWISHER, IOWA

PLAN SHEETS  
**CENTRAL AVENUE AND MAPLE STREET PLAN**

SHEET NO.  
**D.03**

Xref: xgt-1-dh01: Xv-1-AERIAL; XC-1-DSGN; Parking Lot\_V2



**1 BOLLARD DETAIL**  
SCALE: NTS

**LEGEND**

- PAVEMENT REMOVAL AND FULL DEPTH PATCH
- BITUMINOUS SEAL COAT, SINGLE SEAL
- BITUMINOUS SEAL COAT, DOUBLE SEAL

BID SET

DRAWN BY: JEJ JOB DATE: 2025 BAR IS ONE INCH ON OFFICIAL DRAWINGS.  
 APPROVED: ABC JOB NUMBER: 10130127 0" = 1"  
 CAD DATE: 5/23/2025 11:22:04 AM IF NOT ONE INCH, ADJUST SCALE ACCORDINGLY.  
 CAD FILE: O:\10130127.02\CAD\2025PavementRehabAndParking\D.D.01-PARKING.dwg

NO.	DATE	BY	REVISION DESCRIPTION

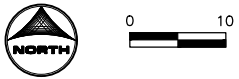


**SWISHER PAVEMENT REHABILITATION - 2025**  
 CITY OF SWISHER  
 SWISHER, IOWA

PLAN SHEETS  
**CITY PARK PARKING LOT PLAN**

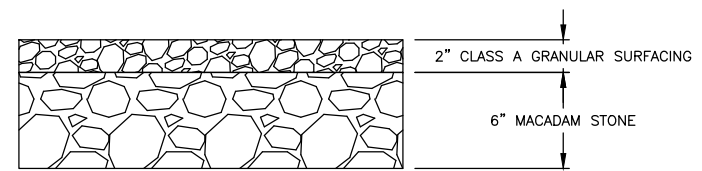
SHEET NO.  
**D.04**

Xref: xgl-1-d01: XV-1-AERIAL; XC-1-DSGN; XC-1-DSGN-CITYPARKLOT



**LEGEND**

- PAVEMENT REMOVAL AND FULL DEPTH PATCH
- BITUMINOUS SEAL COAT, SINGLE SEAL
- BITUMINOUS SEAL COAT, DOUBLE SEAL
- PROPOSED GRANULAR BASE (SEE TYPICAL SECTION)



**1 GRANULAR BASE TYPICAL SECTION**  
SCALE: NTS

BID SET

DRAWN BY: JEJ JOB DATE: 2025 BAR IS ONE INCH ON OFFICIAL DRAWINGS.  
 APPROVED: ABC JOB NUMBER: 10130127 0" = 1"  
 CAD DATE: 5/23/2025 2:04:15 PM IF NOT ONE INCH, ADJUST SCALE ACCORDINGLY.  
 CAD FILE: O:\10130127.02\CAD\2025PavementRehabAndParking\D\01-PARKING.dwg

NO.	DATE	BY	REVISION DESCRIPTION

**HRGreen.com**

**SWISHER PAVEMENT REHABILITATION – 2025**  
 CITY OF SWISHER  
 SWISHER, IOWA

PLAN SHEETS  
**CASTEK PARK PARKING LOT PLAN**

SHEET NO.  
**D.05**

Xref: xg-1-d01; Xv-1-AERIAL; Xc-1-DSGN; Xc-1-DSGN-CITYPARKLOT